



Important instructions. Please read first.

Please follow instructions carefully. Failure to do so will void warranty.
Please ensure installation complies with local law and applicable standards.

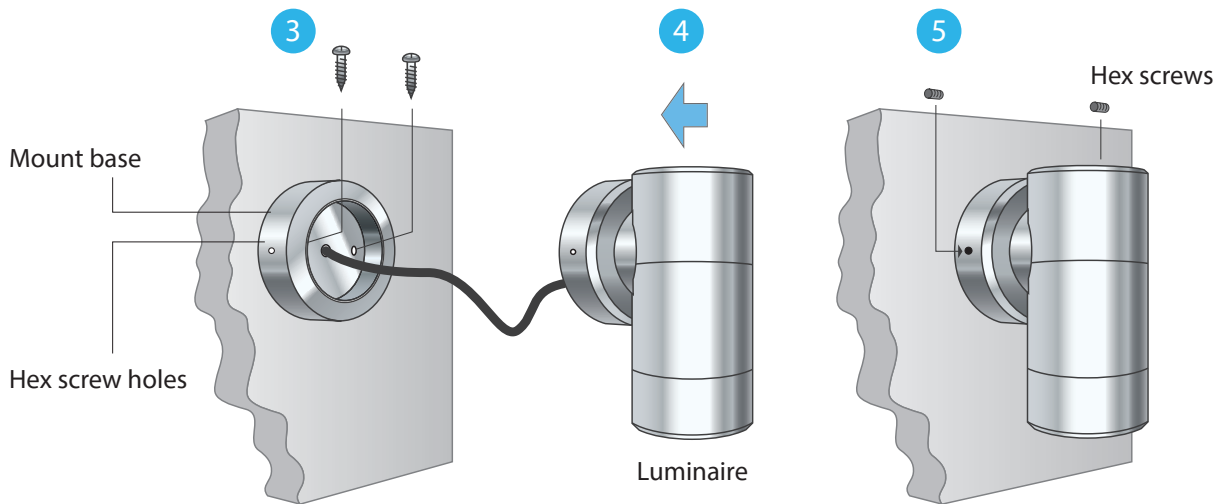
- 1 Only use a Megabay Optimo power supply unit.
- 2 Ensure mains input power is surge protected.
- 3 Never make connections whilst the power is connected.
- 4 Do not make modifications or alter the product.
- 5 Gloves must be worn if handling LEDs or optics.
- 6 Keep luminaire clean and free of debris.



C12

C6

Installation Steps



Step 1 Locate and mark position of luminaires. Observe maximum cable distance & power load.
Drill a hole for cable entry.

Step 2 Run low voltage cable from the power supply unit to the luminaires.



Input voltage range
28V DC ~ 55V DC

Step 3 Screw the mount base to a suitable surface and secure in place.
Note: Ensure exterior hex screw holes are level.

Step 4 Fit luminaire over base and rotate to align hex screw holes.

Step 5 Support the luminaire, insert and tighten the hex screws to secure the luminaire.

Step 6 Make a connection. **See page 2 for wiring & dimming schematic.**
A solder joint insulated with an adhesive lined heat shrink is recommended for long term performance.

Step 7 Apply power and check operation.



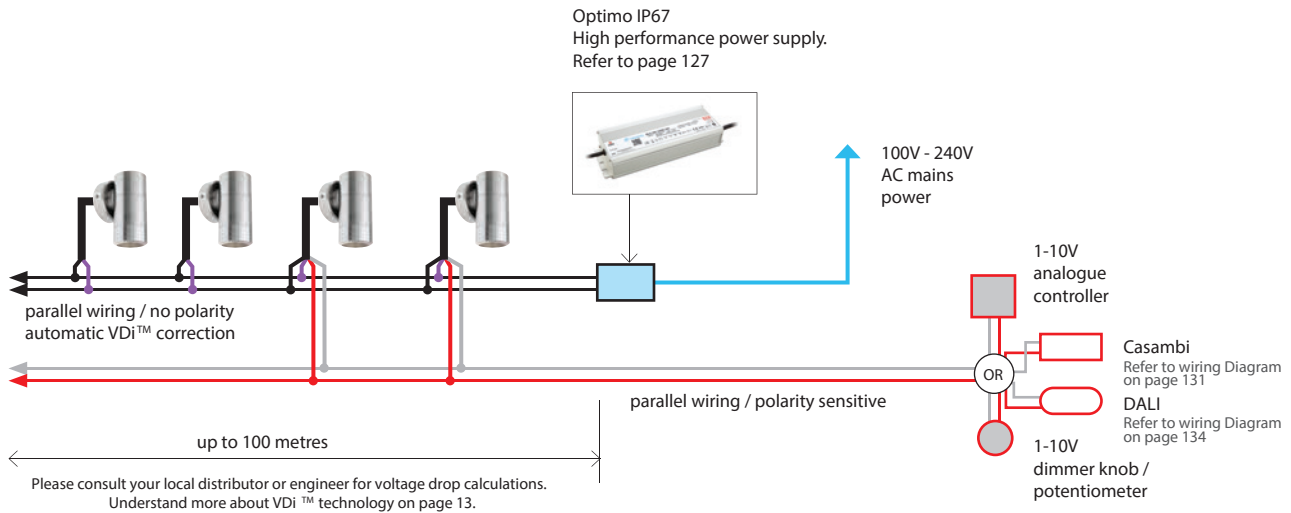
Important Instructions

Please follow instructions carefully. Failure to do so will void warranty.
Please ensure installation complies with local law and applicable standards.

Input voltage range **28V DC ~ 55V DC**

White System Layout

Quantity of luminaires per power supply
Refer to Power Supply in the Technical Specifications table on the next page.



2 Core cable
8.5mm Ø



Blue & Brown
DC voltage input

4 Core cable
6.5mm Ø



Black & Purple DC voltage input

Grey & White negative dimming input (-)
Red & White positive dimming input (+)

RGBW System Layout

Quantity of luminaires per driver
Refer to RGBW Driver in the Technical Specifications table on the next page.

