

Aquovis

THE AMPHIBIOUS & SUBMERSIBLE
UNDERWATER LED LIGHT
SPECIFICATION SHEET



DATE

PROJECT

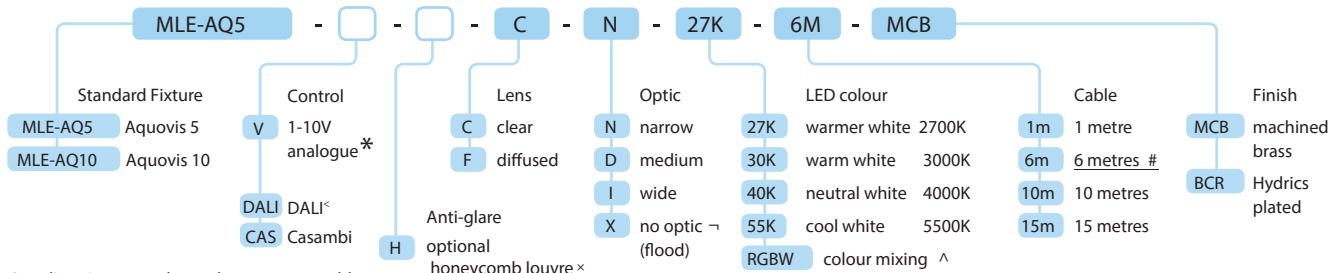
TYPE



AQ5 & AQ10

Specification Code

Select from available options to configure luminaire.

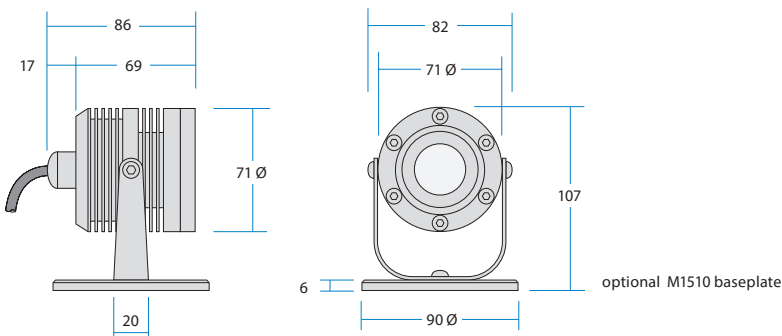


Any dimming control must have a 4 core cable.

- * 1-10V analogue control is optional for white LED Luminaires.
- ^ RGBW luminaires are powered by the RGBW LED Driver, which can be controlled by DALI or DMX512.
- No optic may provide uneven patterns on flat surfaces.
- # 6m cable is the standard length.
- < Must be paired with 24V PSU.
- x Honeycomb is not compatible with RGBW

Dimensions

All measurements are shown in mm.



AQ5 & AQ10

Aquovis Technical Specifications



AQ5



AQ10

Luminaire Specifications

IP rating	Ingress Protection IP68
Materials & finish	thermally optimised DZR brass / Optional Hydrics™ plated finish
Lens	clear or diffused 6mm tempered glass
Performance	> 70% lumen maintenance at 50,000 hours (25° C)
Water temperature	Electronic thermal management protects luminaire if not submerged in water
Optic	narrow 18°, medium 30°, wide 46°, flood > 100° (no optic) offers the widest distribution
Weight	1.125 kg or 1.44 kg with optional baseplate



White Luminaire

Light source	Luxeon™ M LED available in			
	warmer white 2700K - 3000K	neutral white 4000K	cool white 5500K	
CRI	85 ~ 90	80 ~ 85	75	
Luminous intensity			up to 400 lumens	up to 750 lumens
Efficacy	lumens per watt depending on colour temperature		up to 80	up to 75
Power	total wattage including integral VDi™ driver		5W	10W
VDi™ input range (VDC)			11V ~ 55V DC	18V ~ 55V DC
Control	optional 1-10 volt analogue , Casambi, DALI			
Power Supply	Optimo High Performance IP67 Power Supply Units can power the maximum number of luminaires :	MLE-OM-150W-24V	27	13
		MLE-OM-60W-24V	10	5

* Luminaires submerged in water must only be powered by 24V as per Australian standards.



RGBW Luminaire


Light source	CREE™ MC-E quad chip RGBW LED			
CRI	variable depending on colour mix			
Efficacy	up to 95 lumens per watt			
Power	total wattage	4W	10W	
Control	DMX512, DALI or Casambi via PDR-A			
RGBW Driver	MLE-PDR can power the maximum number of luminaires	12		

Aquovis Photometrics

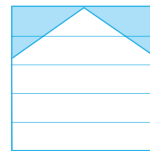
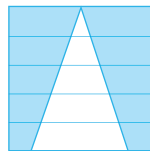
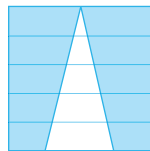
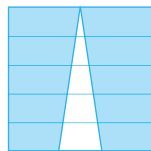
Light level (LUX) readings

Photometric tests are currently being performed.

 warmer white 2700K - 3000K

 neutral white 4000K

- **N** Narrow 18°
- **D** Medium 30°
- **I** Wide 46°
- **X** Flood (no optic) >100°



AQ5

	2700K	3000K	4000K
1m	1381	1473	
2m	373	433	
3m	167	197	
4m	96	113	
5m	61	74	

	2700K	3000K	4000K
1m	595	769	
2m	154	202	
3m	70	92	
4m	40	53	
5m	26	34	

	2700K	3000K	4000K
1m	342	430	
2m	88	113	
3m	40	51	
4m	24	30	
5m	15	20	

	2700K	3000K	4000K
1m	98	119	
2m	26	30	
3m	12	15	
4m	7	9	
5m	5	6	



AQ10

	2700K	3000K	4000K
1m	1810	2550	
2m	543	667	
3m	247	301	
4m	138	169	
5m	92	110	

	2700K	3000K	4000K
1m	854	1105	
2m	226	288	
3m	103	130	
4m	59	75	
5m	39	50	

	2700K	3000K	4000K
1m	480	630	
2m	130	167	
3m	58	76	
4m	34	46	
5m	23	30	



	2700K	3000K	4000K
1m	139	183	
2m	37	49	
3m	18	23	
4m	11	14	
5m	7	10	

Aquovis Accessories

Accessories



Optional baseplate & stainless steel screw

- M1510 - MCB 
- M1510 - BCR 



Power Supply

- MLE-OM-150W-24V 150 watts
- MLE-OM-60W-24V 60 watts

White Accessories



CUBU-ASD



DALI

RGBW Accessories



Quick link connector

MLE-RGBW-QK



10 core cable

MLE-RGBW-?M



CUBU-ASD

RGBW LED driver



MLE-PDR-A



MLE-PDR-M

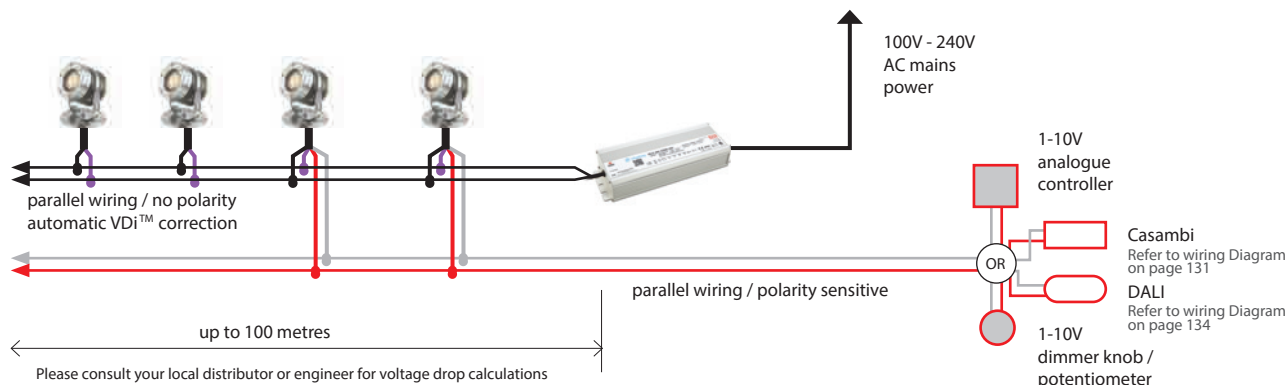


IP66 enclosure for PDR

MLE-PDR-IP66

Aquovis Schematic

White System Layout



2 Core cable
8.5mm Ø



Blue & Brown
DC voltage input

4 Core cable
6.5mm Ø



Black & Purple DC voltage input

Grey & White negative dimming input (-)

Red & White positive dimming input (+)

RGBW System Layout

Quantity of luminaires per driver
Refer to RGBW Driver in the Technical Specifications table on the next page.

