

DATE

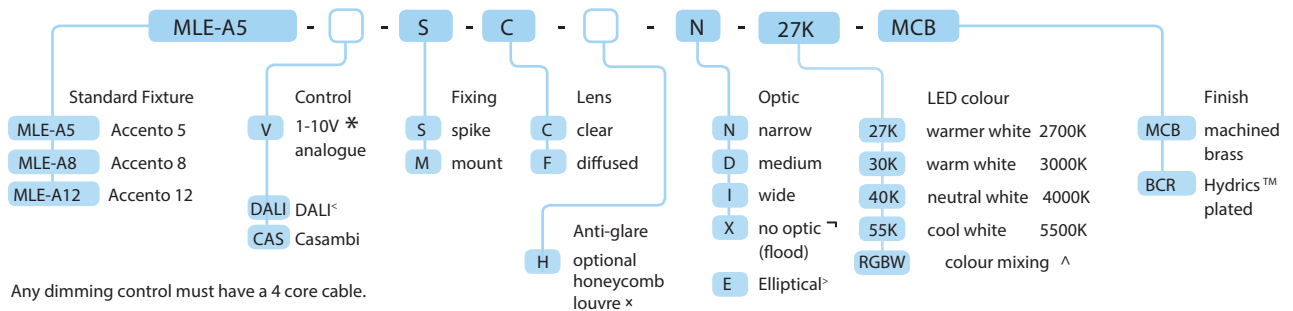
PROJECT

TYPE



Specification Code

Select from available options to configure luminaire.



Any dimming control must have a 4 core cable.

* 1-10V analogue control is optional for white LED luminaires.

[^] RGBW luminaires are powered by the RGBW LED Driver, which can be controlled by DALI or DMX512.

→ No optic may provide uneven patterns on flat surfaces.

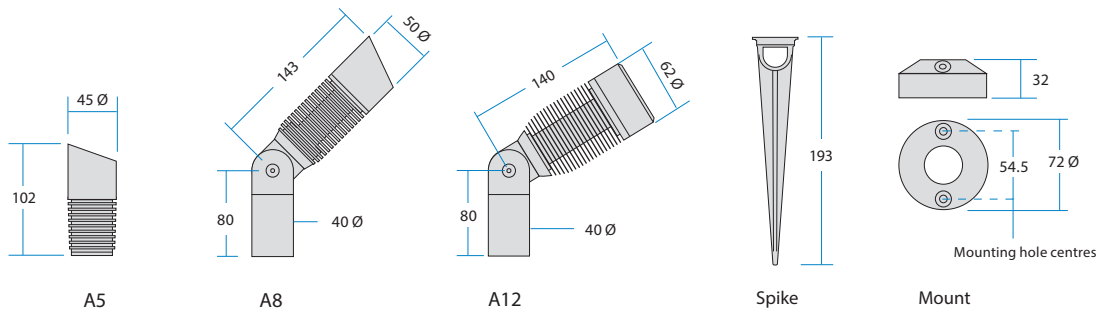
> Elliptical optics are not compatible with RGBW or A12.

< Must be paired with 24V PSU.

x Honeycomb is not compatible with Elliptical and RGBW

Dimensions

All measurements are shown in mm.



Accento Technical Specifications



Luminaire Specifications

IP rating	Ingress Protection IP67			
Materials & finish	thermally optimised DZR brass / optional Hydrics™ plated finish			
Lens	clear or diffused 5mm tempered glass			
Performance	> 70% lumen maintenance at 50,000 hours (25° C)			
Ambient temperature	-25° C to +45° C operating range with electronic thermal management			
Optic	narrow 19°, medium 26°, wide 35°, Elliptical 45° x 15° flood > 100° (no optic) offers the widest distribution	A5 & A8		
	narrow 18°, medium 25°, wide 36°, flood > 100° (no optic)			A12
Weight		0.59 kg	1.54 kg	1.84 kg



White Luminaire

Light source	Luxeon™ LED available in			Luxeon™ M	CREE™ XP LED	
	warmer white 2700K - 3000K	neutral white 4000K	cool white 5500K			
CRI	85 ~ 90	80 ~ 85	75			
Luminous intensity	IES photometric files available			up to 375 lumens	up to 560 lumens	up to 1080 lumens
Efficacy	lumens per watt depending on colour temperature			up to 75	up to 70	up to 90
Power	total wattage including integral VDi™ driver			5W	8W	12W
VDi™ input range (VDC)				11V ~ 55V DC	18V ~ 55V DC	28V ~ 55V DC
Control	optional 1-10 volt analogue, Casambi, DALI					
Power Supply	Optimo High Performance IP67 Power Supply Units can power the maximum number of luminaires	MLE-OM-320W	57	36	24	
		MLE-OM-240W	43	27	18	
		MLE-OM-150W	27	16	11	
		MLE-OM-60W	10	6	4	



RGBW Luminaire

Light source	CREE™ MC-E quad chip RGBW LED			
CRI	Variable depending on colour mix			
Efficacy	Up to 95 lumens per watt			
Power	Total Wattage	4W	4W	10W
Control	DMX512, DALI or Casambi via PDR-A			
RGBW Driver	MLE-PDR can power the maximum number of luminaires	12		4

Accento Photometrics

Light level (LUX) readings

The following tests were performed in 25 degrees ambient temperature after 2 hours of operation. These results were measured using a HAGNER light meter calibrated by a NATA approved laboratory.

- warmer white 2700K – 3000K
- neutral white 4000K



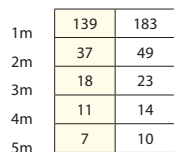
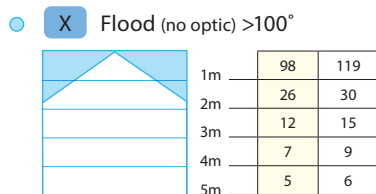
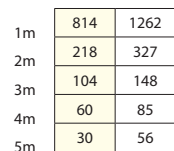
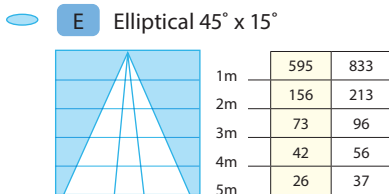
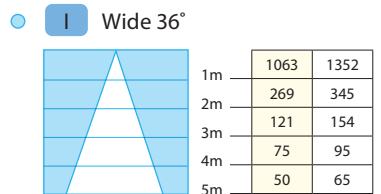
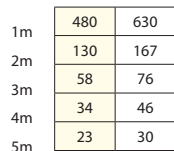
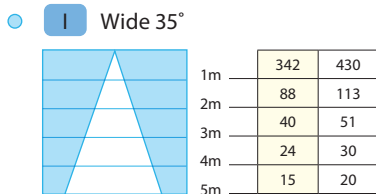
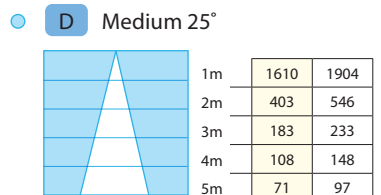
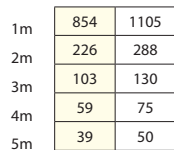
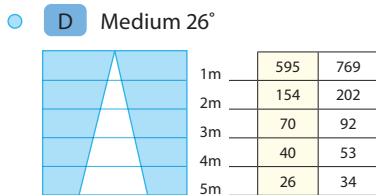
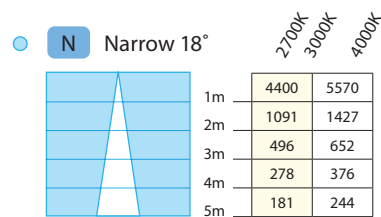
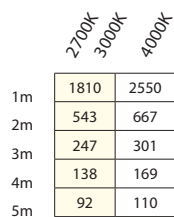
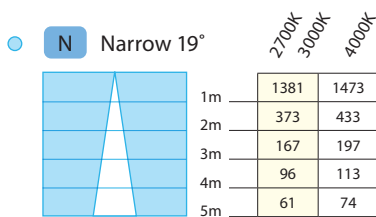
A5



A8



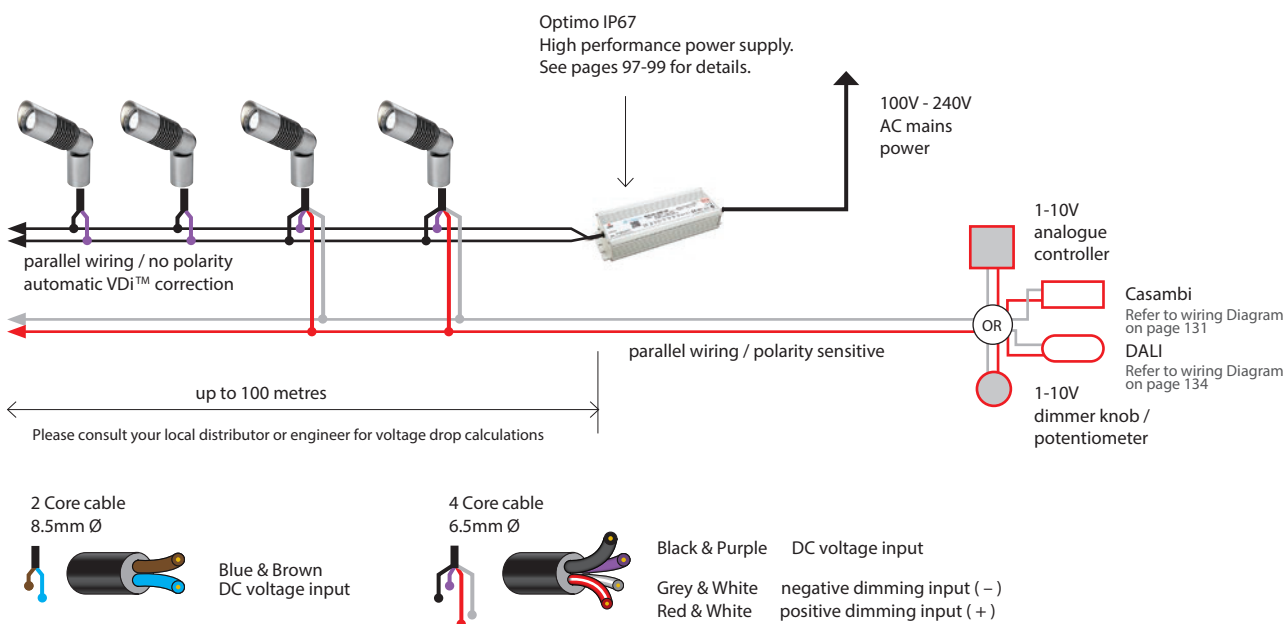
A12



Accento Schematic

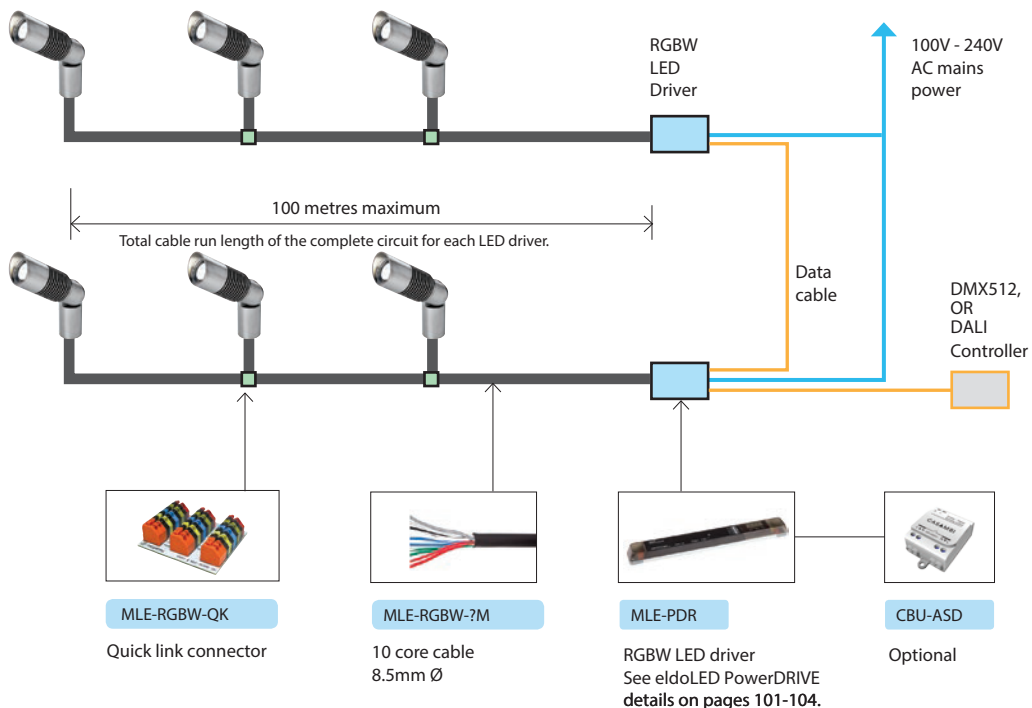
White System Layout

Quantity of luminaires per power supply
Refer to Power Supply in the Technical Specifications table on the next page.



RGBW System Layout

Quantity of luminaires per driver
Refer to RGBW Driver in the Technical Specifications table on the next page.



Accento Accessories

Accessories



Spike Fixing

M1901

SBB



Mount Fixing

M1880

MCB



BCR



Power Supply

MLE-OM-320W

320 watts

MLE-OM-240W

240 watts

MLE-OM-150W

150 watts

MLE-OM-60W

60 watts



Extension Post

M1825 250mm

M1850 500mm

MCB



BCR



RGBW Accessories



Quick link connector

MLE-RGBW-QK



10 core cable

MLE-RGBW-7M

RGBW LED driver



MLE-PDR-A



MLE-PDR-M



IP66 enclosure for PDR

MLE-PDR-IP66



Casambi Module

CBU-ASD

White Accessories



DALI



Casambi Module

CBU-ASD